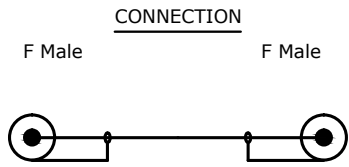
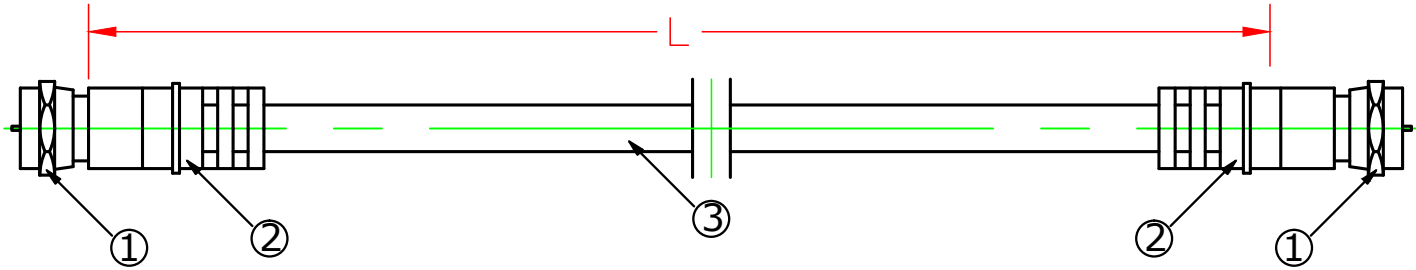


NOTE: ALL MATERIAL COMPLIANT ROHS STANDARD.

REVISION INFORMATION			
Rev.	Rev. Date	Modified By	Brief Description



ELECTRICAL TESTING
 1. CONDUCTOR RESISTANCE: $\leq 5\Omega$ 300V DC
 2. Cable Data rate 3GHz



③	Cable	Cable RG6 with 32/0.10 shielding OD.: 6.8 Black PVC Jacket	1	PC
②	PVC	PVC Black	2	PCS
①	F Male	F Male-Nickel Plated	2	PCS
NO.	PART NAME	SPECIFICATION DESCRIPTION	Q'TY	UNIT

DRAWN BY	DATE: 2013/07/23	DESCRIPTION: F-Type Screw-on RG6 Cable Black
CHECKED BY	SHEET 1 of 1	ITEM NO. LS-RG6-SOCC-NPC-XX
APPROVED BY	SCALE 1:1	REV. 00 UNIT: mm